



Covid-19 Update

Islamic Republic of Iran
Coronavirus Disease 2019

No. 154 / 22 July 2020

IRAN	New Lab Confirmed Cases 2,586	New Deaths 219	Total Lab Confirmed Cases 281,413	Total Recoveries 244,840	Total Deaths 14,853
-------------	--	---------------------------------	--	---	--------------------------------------

Trend of COVID-19

I.R. IRAN Update

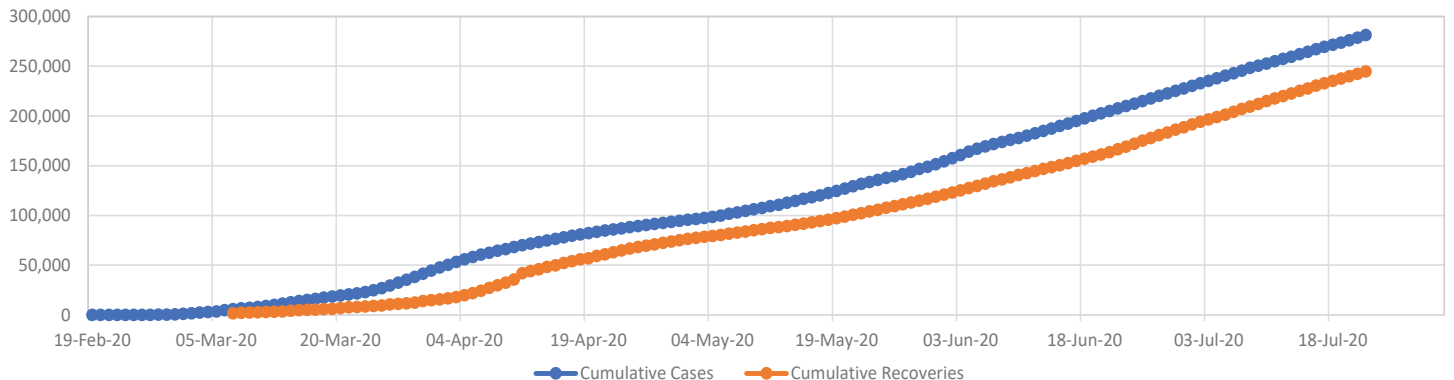
Daily Laboratory Confirmed COVID-19 Cases, 19 Feb - 22 July 2020



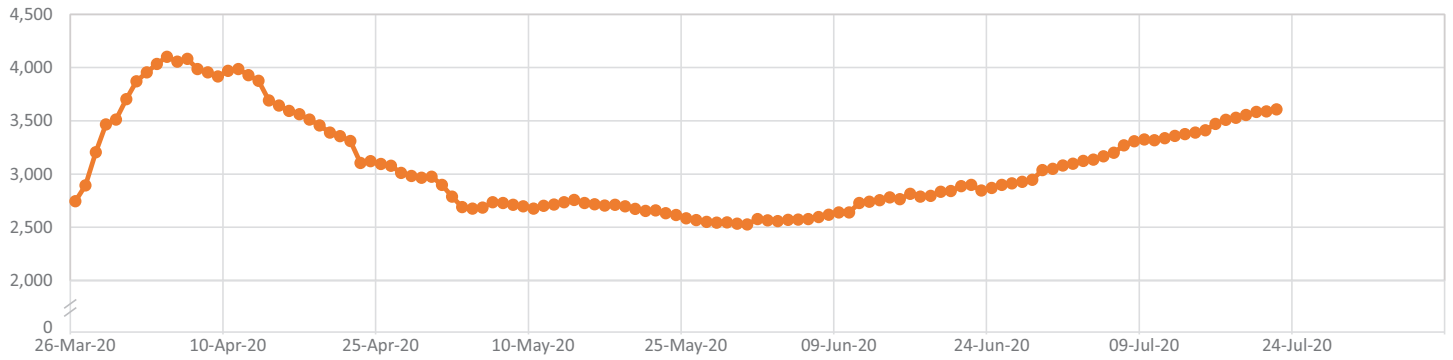
Daily confirmed COVID-19 Deaths, 19 Feb - 22 July 2020



COVID-19 Cumulative Laboratory-Confirmed Cases and Recoveries, 19 Feb - 22 July 2020

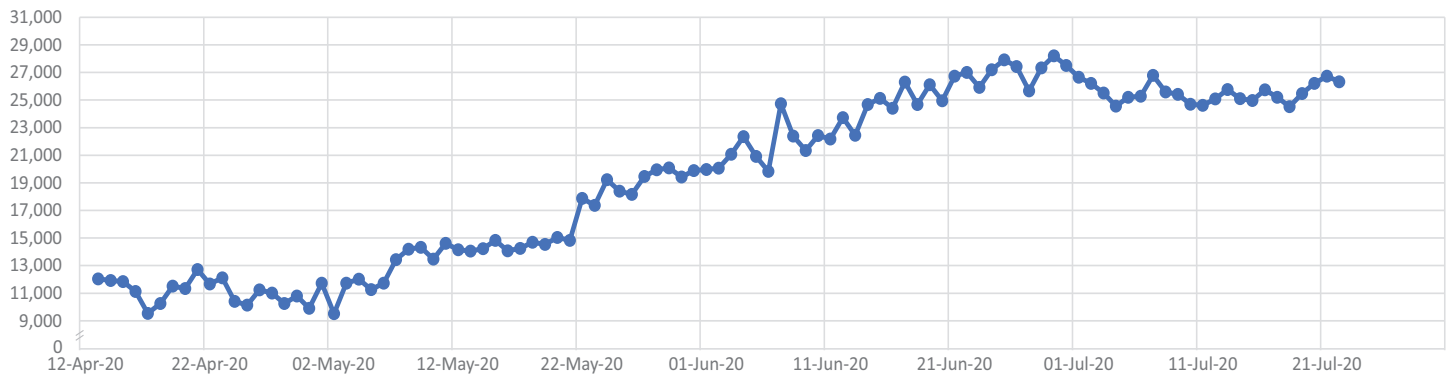


COVID-19 Patients in Intensive Care, 26 Mar - 22 July 2020



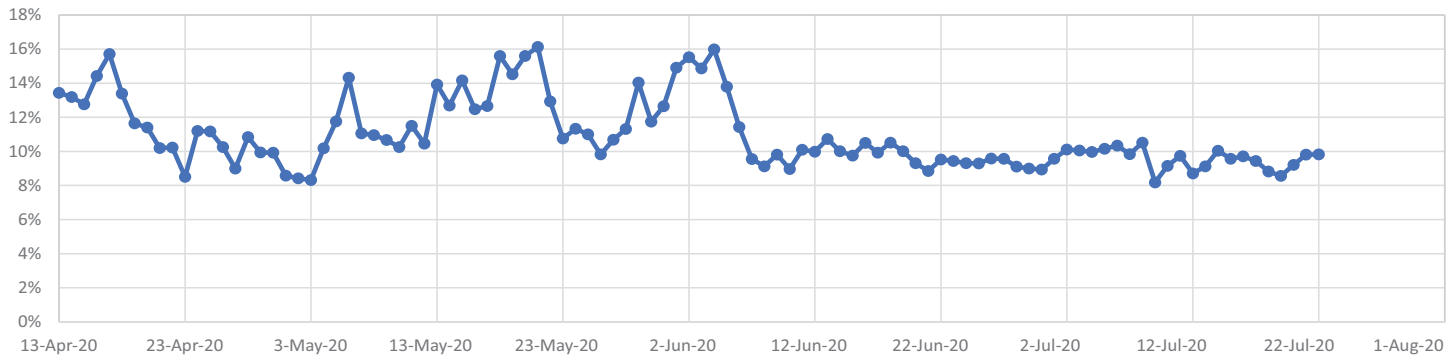
Laboratory Tests Update (national COVID-19 laboratory network)

Total Number of Daily COVID-19 PCR Tests

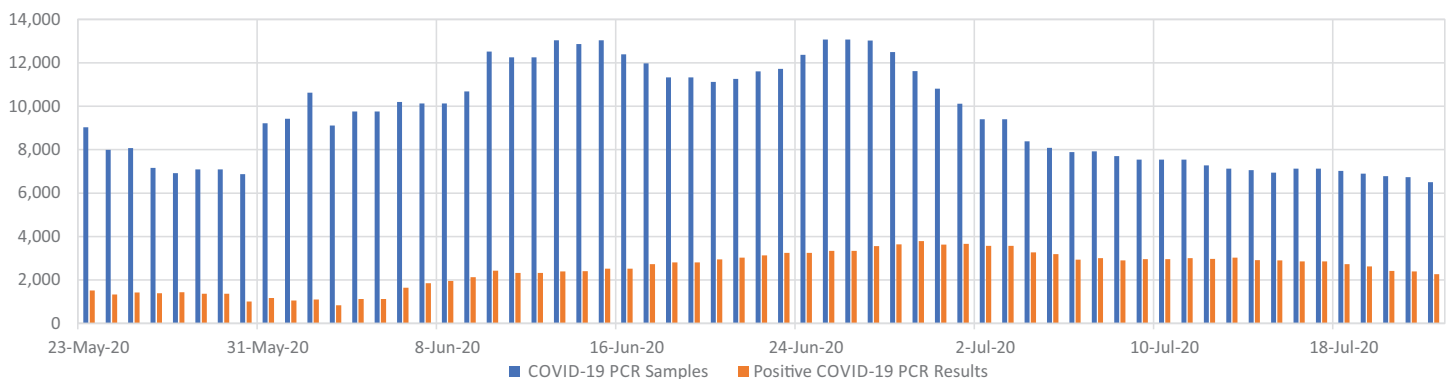


Total cumulative laboratory tests as of today is 2,228,277.

Percentage of Daily Laboratory Confirmed COVID-19 Cases Among Daily COVID-19 PCR Tests Done



7-Days Moving Average of Daily COVID-19 PCR Sampling & Test Results at PHC

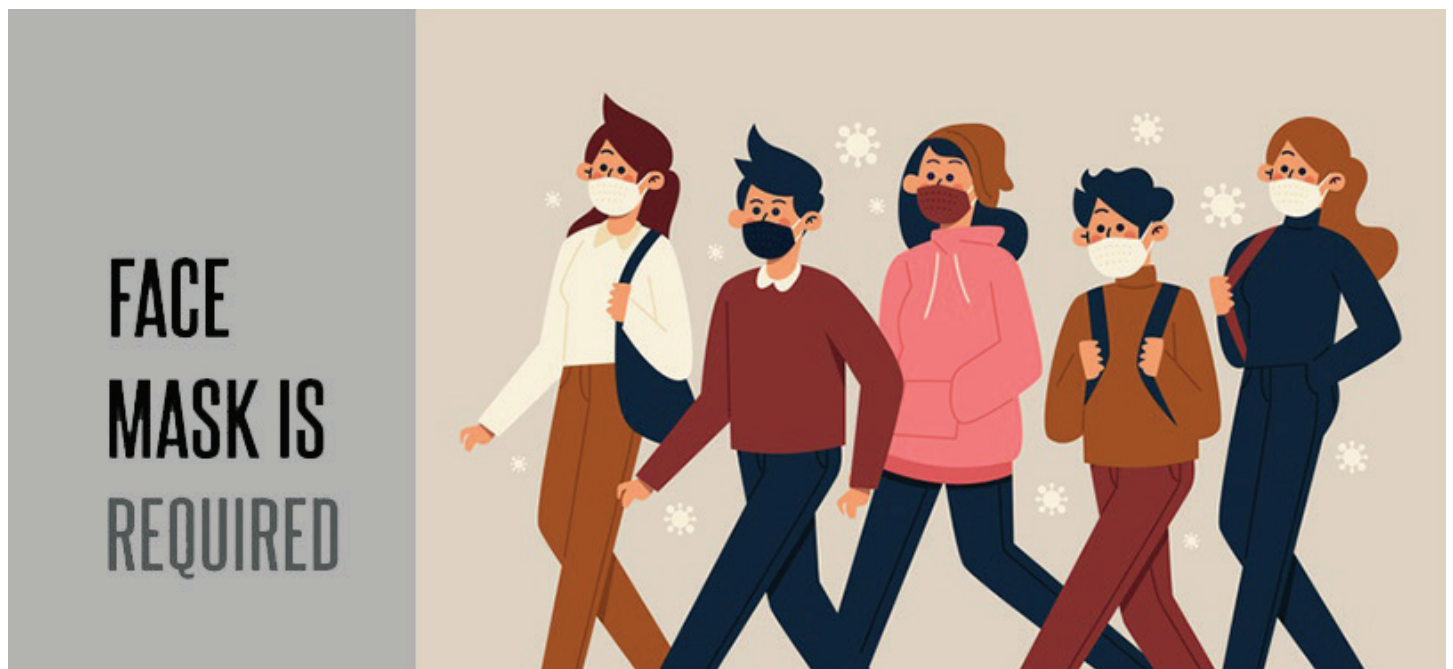


* Source: SIB (31 provinces without Gorgan and Mashhad University of Medical Sciences).

7-Days Moving Average of COVID-19 PCR Samples at PHC Per 100,000 Population by Province

Province	23/05	27/05	31/05	4/06	8/06	12/06	16/06	20/06	24/06	28/06	2/07	6/07	10/07	14/07	16/07	18/07	20/07	22/07
Alborz	9	5	6	7	5	7	12	10	9	13	9	7	7	7	7	7	7	7
Ardebil	13	9	10	10	9	10	12	12	14	15	11	9	9	9	9	8	8	8
Azerbaijan-East	29	16	18	16	15	20	21	19	21	17	9	7	7	9	9	8	7	6
Azerbaijan-West	12	10	17	18	16	20	21	21	22	16	9	10	10	9	8	7	7	6
Bushehr	16	9	14	17	18	24	21	19	15	10	6	5	5	4	3	3	3	3
Charmahal Bakhtiari	8	5	11	12	12	17	19	16	20	23	23	23	22	21	24	22	24	23
Esfahan	13	12	16	14	13	15	14	13	14	14	7	6	6	5	5	5	5	5
Fars	18	17	32	33	28	35	33	28	34	41	31	23	23	21	20	19	19	18
Gilan	9	6	9	8	8	11	8	6	6	8	10	9	8	9	9	9	9	10
Golestan	3	2	1	2	2	3	3	2	6	9	9	8	7	4	4	3	3	4
Hamedan	5	4	6	6	6	8	10	11	13	11	8	7	7	7	7	7	7	6
Hormozgan	19	16	26	26	18	20	20	16	20	22	15	15	15	13	16	18	19	18
Illam	2	2	9	37	30	24	23	17	13	16	17	14	19	22	20	20	18	19
Kerman	6	5	11	10	10	13	16	15	14	15	12	8	8	8	8	8	8	8
Kermanshah	22	17	26	32	31	33	35	30	31	35	24	18	15	14	14	14	12	10
Khorasan-North	5	3	3	3	3	5	4	4	5	6	8	10	11	11	11	11	12	11
Khorasan-Razavi	4	2	3	4	6	6	7	9	8	8	8	7	6	6	7	7	6	6
Khorasan-South	5	5	6	7	6	10	11	11	10	6	3	2	3	4	3	2	2	2
Khuzestan	21	22	38	43	42	46	38	35	36	32	26	23	21	16	16	14	11	9
Kohgilouyeh Buyer Ahmad	11	8	18	24	25	31	37	19	17	21	16	13	14	12	14	15	19	19
Kordestan	15	13	22	24	23	27	32	33	34	29	25	17	13	10	9	9	8	7
Lorestan	31	23	23	20	22	25	22	18	19	20	13	11	11	13	14	14	15	14
Markazi	5	3	5	6	6	8	9	7	8	8	7	6	5	4	4	3	4	4
Mazandaran	6	4	7	6	5	8	8	7	10	11	12	9	7	10	10	10	9	8
Qazvin	7	5	9	9	7	9	9	11	17	18	6	1	0	1	1	2	2	2
Qom	2	2	3	4	3	5	6	5	8	10	9	6	5	4	4	4	4	3
Semnan	13	8	12	12	11	12	18	19	23	15	7	8	9	10	11	10	10	11
Sistan & Baluchestan	5	3	4	4	4	5	6	4	3	4	4	4	4	4	4	6	6	6
Tehran	10	6	9	9	7	9	8	7	8	9	7	6	6	5	5	5	5	6
Yazd	5	3	3	4	2	3	6	9	10	10	13	11	8	8	8	8	8	8
Zanjan	22	17	24	20	18	25	35	37	58	55	43	56	54	48	50	56	56	49
Iran	12	9	14	15	13	16	16	15	16	17	13	11	10	9	10	9	9	9

* Sources: SIB for 31 Provinces, SINA for Mashhad University of Medical Sciences and NAB for Gorgan University of Medical Sciences



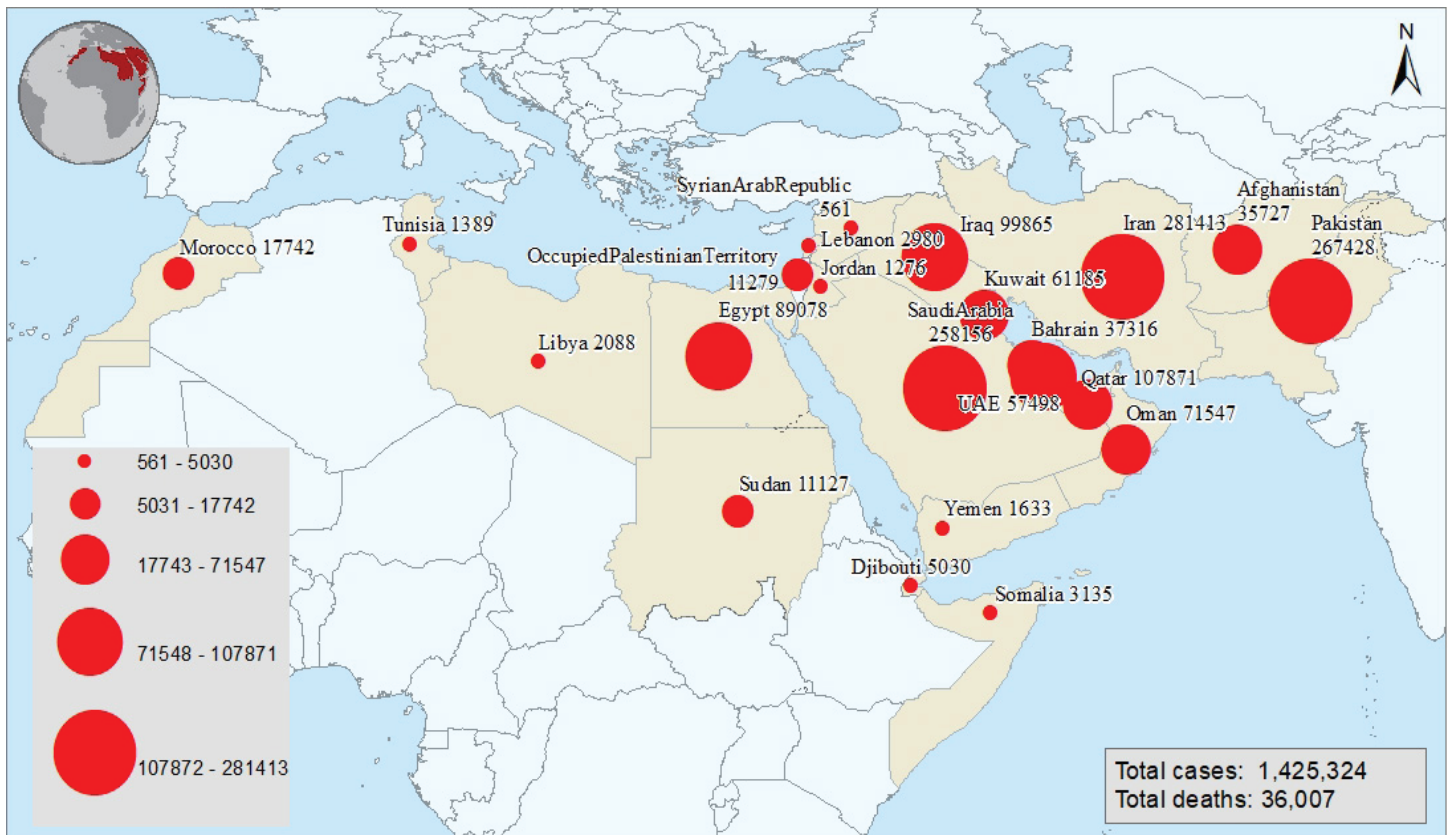
Regional Update

Number of confirmed cases in countries of the region

Country	Cumulative Cases	Cumulative Deaths	Country	Cumulative Cases	Cumulative Deaths
Afghanistan	35,727	1,190	Palestine	11,279	67
Bahrain	37,316	130	Oman	71,547	349
Djibouti	5,030	58	Pakistan	267,428	5,677
Egypt	89,078	4,399	Qatar	107,871	163
Iran	281,413	14,853	Saudi Arabia	258,156	2,601
Iraq	99,865	4,042	Somalia	3,135	93
Jordan	1,276	11	Sudan	11,127	706
Kuwait	61,185	417	Syria	561	32
Lebanon	2,980	41	Tunisia	1,389	50
Libya	2,088	50	UAE	57,498	341
Morocco	17,742	280	Yemen	1,633	457

Total	1,425,324	36,007
--------------	------------------	---------------

Distribution of COVID-19, confirmed cases and deaths in Eastern Mediterranean Region (EMR) as of 22 July 2020, 07:00 PM (GMT+2)



The boundaries and names shown and the designations used on this map do not imply the expression of any opinion whatsoever on the part of the World Health Organization concerning the legal status of any country, territory, city or area or of its authorities, or concerning the delimitation of its frontiers or boundaries. Dotted and dashed lines on maps represent approximate border lines for which there may not yet be full agreement.

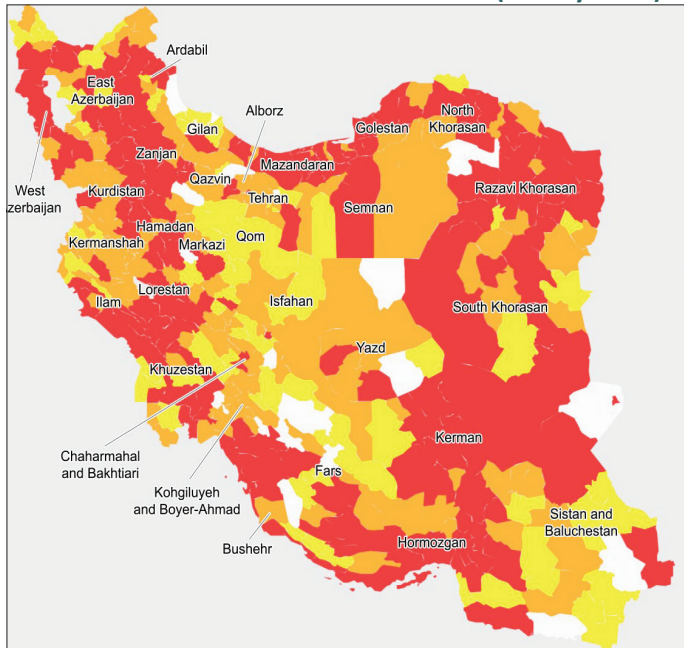
Data source: World Health Organization
 Map production: Health Emergency Information and Risk Assessment (HIM) Unit
 World Health Organization

Important Updates

COVID-19 Risk Status for Iran's Provincial Capitals

Province	Capital	7/05	11/05	17/05	24/05	28/05	31/05	3/06	7/06	9/06	12/06	19/06	27/06	1/07	3/07	5/07	9/07	11/7	13/7	15/7	20/7	
Alborz	Karaj	Yellow	Yellow	Yellow	Yellow	Yellow	Yellow	Yellow	Yellow	Yellow	Yellow	Yellow	Yellow	Yellow	Yellow	Yellow	Yellow	Yellow	Yellow	Yellow	Yellow	Yellow
Ardabil	Ardabil	Red	Red	Yellow	Yellow	Yellow	Yellow	Yellow	Yellow	Yellow	Yellow	Yellow	Yellow	Yellow	Yellow	Yellow	Yellow	Yellow	Yellow	Yellow	Yellow	Yellow
Bushehr	Bushehr	Yellow	Yellow	Yellow	Yellow	Yellow	Yellow	Yellow	Yellow	Yellow	Yellow	Yellow	Yellow	Yellow	Yellow	Yellow	Yellow	Yellow	Yellow	Yellow	Yellow	Yellow
Chaharmahal & Bakhtiari	Shahrekord	Yellow	Yellow	Yellow	Yellow	Yellow	Yellow	Yellow	Yellow	Yellow	Yellow	Yellow	Yellow	Yellow	Yellow	Yellow	Yellow	Yellow	Yellow	Yellow	Yellow	Yellow
East Azerbaijan	Tabriz	Yellow	Yellow	Yellow	Yellow	Yellow	Yellow	Yellow	Yellow	Yellow	Yellow	Yellow	Yellow	Yellow	Yellow	Yellow	Yellow	Yellow	Yellow	Yellow	Yellow	Yellow
Fars	Shiraz	Yellow	Yellow	Yellow	Yellow	Yellow	Yellow	Yellow	Yellow	Yellow	Yellow	Yellow	Yellow	Yellow	Yellow	Yellow	Yellow	Yellow	Yellow	Yellow	Yellow	Yellow
Golestan	Gorgan	Yellow	Yellow	Yellow	Yellow	Yellow	Yellow	Yellow	Yellow	Yellow	Yellow	Yellow	Yellow	Yellow	Yellow	Yellow	Yellow	Yellow	Yellow	Yellow	Yellow	Yellow
Guilan	Rasht	Yellow	Yellow	Yellow	Yellow	Yellow	Yellow	Yellow	Yellow	Yellow	Yellow	Yellow	Yellow	Yellow	Yellow	Yellow	Yellow	Yellow	Yellow	Yellow	Yellow	Yellow
Hamedan	Hamedan	Yellow	Yellow	Yellow	Yellow	Yellow	Yellow	Yellow	Yellow	Yellow	Yellow	Yellow	Yellow	Yellow	Yellow	Yellow	Yellow	Yellow	Yellow	Yellow	Yellow	Yellow
Hormozgan	Bandar Abbas	Yellow	Yellow	Yellow	Yellow	Yellow	Yellow	Yellow	Yellow	Yellow	Yellow	Yellow	Yellow	Yellow	Yellow	Yellow	Yellow	Yellow	Yellow	Yellow	Yellow	Yellow
Ilam	Ilam	Yellow	Yellow	Yellow	Yellow	Yellow	Yellow	Yellow	Yellow	Yellow	Yellow	Yellow	Yellow	Yellow	Yellow	Yellow	Yellow	Yellow	Yellow	Yellow	Yellow	Yellow
Isfahan	Isfahan	Yellow	Yellow	Yellow	Yellow	Yellow	Yellow	Yellow	Yellow	Yellow	Yellow	Yellow	Yellow	Yellow	Yellow	Yellow	Yellow	Yellow	Yellow	Yellow	Yellow	Yellow
Kerman	Kerman	Yellow	Yellow	Yellow	Yellow	Yellow	Yellow	Yellow	Yellow	Yellow	Yellow	Yellow	Yellow	Yellow	Yellow	Yellow	Yellow	Yellow	Yellow	Yellow	Yellow	Yellow
Kermanshah	Kermanshah	Yellow	Yellow	Yellow	Yellow	Yellow	Yellow	Yellow	Yellow	Yellow	Yellow	Yellow	Yellow	Yellow	Yellow	Yellow	Yellow	Yellow	Yellow	Yellow	Yellow	Yellow
Khuzestan	Ahvaz	Yellow	Yellow	Yellow	Yellow	Yellow	Yellow	Yellow	Yellow	Yellow	Yellow	Yellow	Yellow	Yellow	Yellow	Yellow	Yellow	Yellow	Yellow	Yellow	Yellow	Yellow
Kohgiluyeh & Boyer Ahmad	Yasuj	Yellow	Yellow	Yellow	Yellow	Yellow	Yellow	Yellow	Yellow	Yellow	Yellow	Yellow	Yellow	Yellow	Yellow	Yellow	Yellow	Yellow	Yellow	Yellow	Yellow	Yellow
Kordestan	Sanandaj	Yellow	Yellow	Yellow	Yellow	Yellow	Yellow	Yellow	Yellow	Yellow	Yellow	Yellow	Yellow	Yellow	Yellow	Yellow	Yellow	Yellow	Yellow	Yellow	Yellow	Yellow
Lorestan	Khoram-Abad	Yellow	Yellow	Yellow	Yellow	Yellow	Yellow	Yellow	Yellow	Yellow	Yellow	Yellow	Yellow	Yellow	Yellow	Yellow	Yellow	Yellow	Yellow	Yellow	Yellow	Yellow
Markazi	Arak	Yellow	Yellow	Yellow	Yellow	Yellow	Yellow	Yellow	Yellow	Yellow	Yellow	Yellow	Yellow	Yellow	Yellow	Yellow	Yellow	Yellow	Yellow	Yellow	Yellow	Yellow
Mazandaran	Sari	Yellow	Yellow	Yellow	Yellow	Yellow	Yellow	Yellow	Yellow	Yellow	Yellow	Yellow	Yellow	Yellow	Yellow	Yellow	Yellow	Yellow	Yellow	Yellow	Yellow	Yellow
North Khorasan	Bojnord	Yellow	Yellow	Yellow	Yellow	Yellow	Yellow	Yellow	Yellow	Yellow	Yellow	Yellow	Yellow	Yellow	Yellow	Yellow	Yellow	Yellow	Yellow	Yellow	Yellow	Yellow
Qazvin	Qazvin	Yellow	Yellow	Yellow	Yellow	Yellow	Yellow	Yellow	Yellow	Yellow	Yellow	Yellow	Yellow	Yellow	Yellow	Yellow	Yellow	Yellow	Yellow	Yellow	Yellow	Yellow
Qom	Qom	Yellow	Yellow	Yellow	Yellow	Yellow	Yellow	Yellow	Yellow	Yellow	Yellow	Yellow	Yellow	Yellow	Yellow	Yellow	Yellow	Yellow	Yellow	Yellow	Yellow	Yellow
Khorasan Razavi	Mashhad	Yellow	Yellow	Yellow	Yellow	Yellow	Yellow	Yellow	Yellow	Yellow	Yellow	Yellow	Yellow	Yellow	Yellow	Yellow	Yellow	Yellow	Yellow	Yellow	Yellow	Yellow
Semnan	Semnan	Yellow	Yellow	Yellow	Yellow	Yellow	Yellow	Yellow	Yellow	Yellow	Yellow	Yellow	Yellow	Yellow	Yellow	Yellow	Yellow	Yellow	Yellow	Yellow	Yellow	Yellow
Sistan and Baluchestan	Zahedan	Yellow	Yellow	Yellow	Yellow	Yellow	Yellow	Yellow	Yellow	Yellow	Yellow	Yellow	Yellow	Yellow	Yellow	Yellow	Yellow	Yellow	Yellow	Yellow	Yellow	Yellow
South Khorasan	Birjand	Yellow	Yellow	Yellow	Yellow	Yellow	Yellow	Yellow	Yellow	Yellow	Yellow	Yellow	Yellow	Yellow	Yellow	Yellow	Yellow	Yellow	Yellow	Yellow	Yellow	Yellow
Tehran	Tehran	Yellow	Yellow	Yellow	Yellow	Yellow	Yellow	Yellow	Yellow	Yellow	Yellow	Yellow	Yellow	Yellow	Yellow	Yellow	Yellow	Yellow	Yellow	Yellow	Yellow	Yellow
West Azerbaijan	Urmia	Yellow	Yellow	Yellow	Yellow	Yellow	Yellow	Yellow	Yellow	Yellow	Yellow	Yellow	Yellow	Yellow	Yellow	Yellow	Yellow	Yellow	Yellow	Yellow	Yellow	Yellow
Yazd	Yazd	Yellow	Yellow	Yellow	Yellow	Yellow	Yellow	Yellow	Yellow	Yellow	Yellow	Yellow	Yellow	Yellow	Yellow	Yellow	Yellow	Yellow	Yellow	Yellow	Yellow	Yellow
Zanjan	Zanjan	Yellow	Yellow	Yellow	Yellow	Yellow	Yellow	Yellow	Yellow	Yellow	Yellow	Yellow	Yellow	Yellow	Yellow	Yellow	Yellow	Yellow	Yellow	Yellow	Yellow	Yellow

COVID-19 Risk Status for Iran's Counties (20 July 2020)



The status of the cities is being updated in the Mask app, endorsed by Iran's Ministry of Health and Medical Education, Link to the Mask application website: <https://mask.ir/>


Imposed International Restrictions

(No significant change compared to yesterday)

Travelers are strongly recommended to visit government websites for updated information and more details regarding the international restrictions for entering the countries.

Restrictions on Iran Borders (as of 22 July, 13:00 PM)
The Latest Situation of Cargo and Passenger Traffic in the Common Borders of Iran and Neighboring Countries

Country	Border/Crossing	Cargo Status	Passenger Traffic Status	Remarks
Iraq	Mehran	Allowed	Not Allowed	Embassy of Iran in Baghdad announced that Iraqi nationals having Iranian wives and their children, Iraqi students and merchants, Iraqi nationals with work permit and those Iraqis who intend to travel Iran for the purpose of medical treatment are being granted visa to enter Iran. Currently Iraqis with tourism and pilgrimage purposes are not allowed to enter Iran. Travelers are required to have valid health certificates indicating negative Coronavirus test. In addition, their passport numbers must have been printed in their health certificates. The Embassy of Iran also announced that among the Iranians, only diplomats are currently allowed to enter Iraq. (IRAN News) Mehran border - operational on Sundays and Wednesdays allowing the daily transport of 250 trucks. Health protocols are strictly followed on Mehran crossing. Negotiations are still ongoing for full reopening of the Mehran border. All entrants to Iraq from this border point must have a health certificate with a negative Coronavirus (COVID-19) test result. Shalamcheh - reopened on 8 July 2020. The border point will be operational two days per week allowing transport of 250 trucks daily from Iran to Iraq. (Tasnim News) Chazabeh - will reopen on 23 July 2020, for cargo transit with full compliance of health protocols. (Hamshahri News) Bashmagh-Marivan - export and transit is operational through this border. Khosravi – reopened on 22 June 2020, for individual passenger traffic with full compliance of health protocols. Prime Minister of Iraq agreed with reopening of Khosravi border for cargo transit. The border point will reopen soon. (Hamshahri News) Khosravi border will reopen for cargo transit in the coming days. (Mashregh News) Parviz Khan - reopened on Monday 25 May 2020. Tamarchin – export and transit is operational through this border but at a low pace. Soumar (Mandalali) – reopened by Iraq’s Prime Minister on 11 July 2020, and will be operational for two days per week. (IRNA News)
	Shalamcheh	Allowed	Not Allowed	
	Chazabeh	Not Allowed	Not Allowed	
	Siran Band-Baneh, Sardasht-Kileh, Shushemi, Sheikh Sallah	Allowed	Not Allowed	
	Bashmagh-Marivan	Allowed	Not Allowed	
	Khosravi	Not Allowed	One-way Allowed	
	Parviz Khan	Allowed	Not Allowed	
	Tamarchin	Allowed	Not Allowed	
	Soumar	Allowed	Not Allowed	
Oman	Air Traffic- Passenger Ferry- Cargo	Allowed	Not Allowed	Maritime transportation in the route of Bandar Abbas port and Sultan Qaboos port has been operated by Al-Marafi company from 20 March. Effective from 25 March, import and export by wooden liner is not allowed until further notice. Al-Marafi company facilitates the transportation of food supplies from Bandar Abbas to Oman. Only nationals are allowed to enter Oman.
Kuwait	Air Traffic- Passenger Ferry- Cargo	As per the remarks	Not Allowed	Traffic of wooden vessels is prohibited but metal vessels and the vessels with refrigerator are allowed to transport. Export of fruit and grocery supplies from Iran to Kuwait has commenced from 20 April. Passengers are not allowed to enter Kuwait. (This does not apply to nationals of Kuwait and their first-degree relatives. They must have a OK TO TRAVEL authorization obtained from the state of Kuwait embassy). Diplomatic passport holders, UN passport holders and members of UNESCO with prior approval from the government authorities are also allowed to enter Kuwait. Passengers must install ‘Shlonik’ in their personal device before departure.

Country	Border/Crossing	Cargo Status	Passenger Traffic Status	Remarks
Qatar	Air Traffic- Passenger Ferry- Cargo	As per the remarks	Transit Allowed	Traffic of wooden vessels is prohibited but metal vessels and the vessels with refrigerator are allowed to transport. In case the passengers or the crew show any symptoms of COVID-19 they will be quarantined for 14 days. Only nationals and residents are allowed to enter Qatar.
Emirates	Air Traffic- Passenger Ferry- Cargo	Allowed	Not Allowed	<p>Traffic of wooden vessels is prohibited but metal vessels and the vessels with refrigerator are allowed to transport. Hamriyah Port only allows vessels carrying Fruits and Vegetables.</p> <p>Transportation of the essential supplies are operational through air traffic by Mahan and Qeshm airlines.</p> <p>All passenger flights are suspended (this does not apply to aircrafts operated for the purpose of evacuation and over-flights)</p> <p>Only nationals and residents are allowed to enter Emirates. Residents must have a Resident Entry Permit obtained before departure and are subject to medical screening and quarantine.</p> <p>For all passengers, a completed self-declaration health form must be presented upon arrival at Dubai (DXB).</p> <p>There are restrictions imposed for the supplies arriving from China at Emirates ports.</p> <p>The UAE has obliged all commercial ships coming to the country to provide a statement on the health status of their crews 72 hours before arrival.</p> <p>Effective 7 July 2020, passengers traveling as tourist are allowed to enter Dubai (DXB). They must have a medical certificate with a negative Coronavirus (COVID-19) test result issued at most 96 hours before departure, and a valid travel insurance with coverage of 50,000 Euros including coverage of 5,000 Euros for COVID-19 medical expenses. In addition, a completed self-declaration health form must be presented upon arrival at Dubai (DXB).</p> <p>If passengers do not have the certificate, they are subject to a PCR test on arrival. If the test result is positive, they are subject to quarantine for 14 days.</p> <p>Allowed passengers must refer to https://smartservices.ica.gov.ae for more information about the required Coronavirus test in order to enter UAE. Iranian passengers may only refer to below health centers for the required health certificate:</p> <ol style="list-style-type: none"> 1. Erfan Niayesh Hospital (Tehran) 2. Iran Pathology Laboratory (Tehran) 3. Kavian Laboratory (Tehran) 4. Day Hospital (Tehran) 5. Nobel Laboratory (Isfahan) 6. Yaran Laboratory (Isfahan) 7. Organ transplantation Center of Abualisina Hospital (Shiraz) 8. Niloo Pathology Laboratory (Shiraz) 9. Pars Laboratory (Shiraz) 10. Doctor Moddaresi Laboratory (Lar) 11. Lar University of Medical Sciences (Lar) 12. Doctor Atash Aabparvar Laboratory (Bandar Abbas) 13. Kish Hospital (Kish) 14. Bu Ali Laboratory (Qom) 15. Central Jihad Daneshgahi Laboratory (Mashhad) <p>All passengers arriving at Dubai (DXB) must download and register the COVID-19 DXB Smart App.</p>
Turkmenistan	Sarakhs, Lotfabad, Bajgiran and Incheh Borun	Not Allowed	Not Allowed	<p>Sarakhs border bridge officially inaugurated on 8 June 2020. Sarakhs rail border reopened on 18 June 2020.</p> <p>According to the Governor of Sarakhs, currently cargo transportation capacity at this rail border has increased to 100 wagons per day.</p> <p>Only nationals and residents are allowed to enter Turkmenistan.</p>

Country	Border/Crossing	Cargo Status	Passenger Traffic Status	Remarks
Azerbaijan	Astara, Bilehsavar, Jolfa	Allowed	Not Allowed	Land borders are open for transporting commercial supplies. Maritime transportation is operational. Railway transportation is allowed from Astara. Azerbaijan and Russia common land borders are open for the transportation of Iranian supplies. Passengers are not allowed to enter Azerbaijan until 1 August 2020 (This does not apply to nationals and residents of Azerbaijan). Allowed passengers must have a medical certificate with a negative COVID-19 test result issued at most 48 hours before departure. In addition, a completed Public Health Passenger Locator Form must be presented upon arrival.
Armenia	Nurdz	Allowed	Visa exemption is Suspended.	Transportation of goods is operational under both countries' MoH protocols. Nearly the export of all Iranian products to Armenia is commenced and transshipment at Meghri border has speeded up. Armenia has issued electronic visa for the Iranian truck drivers who cannot reload at the border and the trucks are escorted by police to their final destination in Armenia. Passengers are not allowed to enter Armenia (This does not apply to residents, nationals and their immediate family members, diplomats and their immediate family members).
Kazakhstan	Aktau Port Almaty	As per the remarks	Not Allowed	Iranian goods are being received after all health controls. Only nationals and residents are allowed to enter Kazakhstan.
Russia	Astrakhan Makhachkala	As per the remarks	Not Allowed	Maritime transportation is operational. Only transit road transportation is allowed. Passengers are not allowed to enter the Russian Fed. (this does not apply to nationals, diplomatic missions, employees of international organizations located in Russian Fed. and their family members).
Afghanistan	Doqaroun, Mahiroud, Milak, Gamshad	Allowed	Not Allowed	Only nationals and residents are allowed to enter Afghanistan and passenger transportation is not allowed, but all border crossings with Afghanistan have reopened and trade exchanges between the two neighbors have returned to normal. Iranian and Afghan truck drivers carrying goods are easily granted entry visa. International flights to Afghanistan restarted. (IATA Travel Center)
Pakistan	Kuhak, Pishin, Rimdan Jalegh, Mirjaveh	Allowed Not Allowed Allowed	Not Allowed Not Allowed Not Allowed	Only nationals and residents are allowed to enter Pakistan. All cargo transport restrictions at Pakistan border points were lifted on 5 July 2020.
Turkey	Serow/Urmia Bazargan/Maku Razi/Khoy	Allowed Allowed Allowed	Operational only for returning the residents to their home country. Operational only for returning the residents to their home country. Operational only for returning the residents to their home country.	Iran and Turkey land borders opened for cargo transit on 4 June 2020 at 10:30 am. Iranian and Turkish trucks and transit vehicles are allowed to pass through the border points on the condition that the health protocols agreed between the two sides are observed. Currently cargo rail transport is operational at the Razi rail border. Currently only Iranian nationals with permanent Turkish residency or work permit are allowed to enter Turkey. Due to increase in the number of COVID cases, Turkey closed its air border with Iran on 20 July 2020 and all direct flights from Iran to Turkey are suspended. (IRNA News)

Further updates regarding the countries imposing travel bans for passengers with a travel history to Iran are provided in the below link: <https://www.iatatravelcentre.com/international-travel-document-news/1580226297.htm>
The global IOM portal tracking mobility restriction can also be reached at: <http://migration.iom.int/>

Travel Restrictions Imposed by Iran

Effective from 25 July 2020, all arriving passengers at all Iranian air borders are required to present a completed self-declaration health form together with a health certificate issued in English by appropriate health authorities indicating negative PCR test result issued at most 96 hours before departure. Should the health certificate not be presented on arrival, foreign passport holders will not be permitted to enter Iran and Iranian nationals will be quarantined in assigned locations by Iran MoH in the airports for 14 days and passengers shall incur all the expenses including medical tests and accommodation. (IKIA Information Center)

Imam Khomeini International Airport (IKIA) office can be reached at +9821 5100 111 regarding the issues related to health regulations both for incoming and outgoing flights. IKIA is also equipped with three disinfecting machines for passengers and baggage as a measure to prevent the spread of coronavirus at the airport.

International Airlines

Qatar Airways: Currently operates two daily flights to and from Tehran as per the below schedule. No health certificate or mode of screening at the airport has been advised yet for transit. 14 days of quarantine would be applied for entering Doha.

Day	Flight No	Origin	Destination	Departure	Arrival
Daily	QR490	Doha	Tehran	00:50	04:20
	QR491	Tehran	Doha	05:30	06:00
	QR498	Doha	Tehran	18:30	22:00
	QR499	Tehran	Doha	23:15	23:45

Qatar Airways will resume Mashhad-Doha flights from next week and will operate four weekly flights on Sundays, Mondays, Wednesdays and Fridays. (IRNA News)

Emirates Airways: Cancelled the scheduled daily flights. Effective 20 July 2020, Emirates operates two weekly flights from and to Tehran on Saturdays and Mondays.

Turkish Airlines: Despite the previous announcement on resumption of Turkish flights on 10 June 2020, all scheduled flights to and from Iran are cancelled until 30 July 2020.

National Airlines

Iran Air: Currently operates three weekly flights to London on Sundays, Tuesdays and Thursdays, two weekly flights to Paris on Mondays and Fridays, one weekly flight to Amsterdam on Thursdays, one weekly flight to Milan on Fridays and one weekly flight to Manchester every Saturday. Currently Iran Air negotiates to resume flights to Germany. Only the passengers with European residency card, Type D visa holders and long-term visa holders can embark on these flights. In addition, Iran Air operates extra flights to Madrid, Karachi and Minsk for the purpose of returning Iranians only. Following health screening at Imam Khomeini International Airport, passengers are being provided with the required Health certificate for international flights.

Iran Air central office in Tehran can be reached at +98 21 46621888 for further information.

Mahan Air: Currently operates daily conditional flights to Istanbul and Dubai and extra flights to Damascus, Delhi, Moscow, Bangkok and Kuala Lumpur for returning Iranian passengers to the country. Mahan Air resume daily Tehran – Dubai – Tehran passenger flights on 9 July 2020.

Mahan Air call center in Tehran can be reached at +98 21 48384838 for further information.

Effective 20 July 2020, Mahan Air operates one weekly flight to Guangzhou. Passengers are required to have medical certificate with a negative Coronavirus (COVID-19) test result issued at most 72 hours before departure. Passengers are required to refer to below health centers for the required health certificate:

- Day Hospital Laboratory (Tehran)
- Saeed Laboratory (Tehran)
- Aramesh Laboratory (Tehran)
- Azarmehr Laboratory (Isfahan)
- Arad Pathobiology Laboratory (Karaj)
- Central Jihad Daneshgahi Laboratory (Mashhad)

Passengers will be tested again for COVID-19 upon arrival in Guangzhou airport and are subject to quarantine for 14 days. Currently some other national airlines such as **Taban, Zagros, Iran Airtour, Iran Aseman and Qeshm airlines** are also operating some conditional flights mainly in the route of Istanbul and Dubai for returning Iranians.

Available Cargo Services

Qatar Airways: Operates two weekly cargo flights on Saturdays and Wednesdays. The airline also operates some additional flights during the week for cargo services. The daily flight of QR498 also accepts cargo. Qatar Airways Cargo has offered and confirmed to fly any medical supplies to China and Iran free of charge; however, these shipments must come through the Embassy of China and Embassy of Iran at the origin station, the Embassy must be the shipper. Qatar Airways cargo office in IKIA can be reached at +98 21 55678368.

Mahan Air: Cargo service is currently available for China, Bangkok, Kuala Lumpur, Istanbul, Barcelona, Moscow and Dubai. Mahan Air cargo office in IKIA can be reached at +98 21 55678215.

Qeshm Airline: Cargo service is currently available for the special flights from Istanbul. Qeshm Airline cargo office in IKIA can be reached at +98 21 55678355.

Iran Air Cargo: is currently operational for London, Paris and Italy.



IKIA Board 22 July 2020

Status	Airline	Flight No	From/To	Remarks	Time
Arrival	Mahan Air	W5115	Istanbul	Conditional flight for returning Iranians.	00:55
	Qatar Airways	QR490	Doha	Operational for transit and cargo flights only.	04:20
	Mahan Air	W5070	Delhi	Conditional flight for returning Iranians.	05:20
	Mahan Air	W5060	Dubai	Conditional flight for returning Iranians.	14:30
	Iran Airtour	B99701	Istanbul	Conditional flight for returning Iranians.	15:20
	Qatar Airways	QR498	Doha	Operational for transit and cargo flights only.	22:00
Departure	Qatar Airways	QR491	Doha	Operational for transit and cargo flights only.	05:30
	Mahan Air	W5061	Dubai	Conditional flight for returning Iranians.	08:00
	Mahan Air	W5051	Bangkok	Conditional flight for returning Iranians.	22:10
	Qatar Airways	QR499	Doha	Operational for transit and cargo flights only.	23:15


Imposed National and Provincial Restrictions

The Province of Fars tightens restrictive measures by forbidding all social activities, including conventions, entrance exams, wedding, and funerals (even in the

households), and closing parks and recreation centers throughout the province.

Other than the above, there is no further change in the imposed national and provincial restrictions compared with the updates for 21 July 2020.


Useful links
WHO website on coronavirus:

<https://www.who.int/emergencies/diseases/novel-coronavirus-2019>

WHO online training:

<https://www.who.int/emergencies/diseases/novel-coronavirus-2019/training/online-training>

WHO COVID-19 Situation reports:

<https://www.who.int/emergencies/diseases/novel-coronavirus-2019/situation-reports>

New EPI-WIN website:

Access to timely, accurate, and easy-to-understand advice and information from trusted sources

www.who.int/epi-win

Weblink to Farsi translations of WHO public awareness raising materials for COVID-19:

<https://www.who.int/ar/emergencies/diseases/novel-coronavirus-2019-farsi/advice-for-public-farsi/>

Protect yourself and others

<http://www.emro.who.int/health-topics/corona-virus/protect-yourself-and-others.html>

Myth busters

<https://www.who.int/emergencies/diseases/novel-coronavirus-2019/advice-for-public/myth-busters>

Travel health

<https://www.who.int/news-room/articles-detail/key-considerations-for-repatriation-and-quarantine-of-travellers-in-relation-to-the-outbreak-of-novel-coronavirus-2019-ncov/>

Videos

<http://www.emro.who.int/health-topics/corona-virus/videos.html>

Questions and answers

<http://www.emro.who.int/health-topics/corona-virus/questions-and-answers.html>

Technical guidance

<https://www.who.int/emergencies/diseases/novel-coronavirus-2019/technical-guidance>

HIV and COVID-19

https://www.unaids.org/en/resources/documents/2020/HIV_COVID-19_brochure

WHO Database of Publications on Coronavirus Disease (COVID-19)

<https://www.who.int/emergencies/diseases/novel-coronavirus-2019/global-research-on-novel-coronavirus-2019-ncov>

Worldometers Information on COVID-19 cases:

<https://www.worldometers.info/coronavirus/>

WHO COVID-19 Updates:

<https://covid19.who.int>

COVID-19 Health System Response Monitor

<https://www.covid19healthsystem.org/mainpage.aspx>

WHO Iran Country Office COVID-19 Daily Updates Archive:

https://drive.google.com/drive/folders/1QCng86-Ss4v8-RV2E4E7vR7a7OqNeT_?usp=sharing

Contact:

Dr Christoph Hamelmann

WHO Representative in the Islamic Republic of Iran

Building of the Ministry of Health & Medical Education,
East Eyvanak Blvd., Phase 4, Shahrak-e Qods, Tehran, Iran.

Tel: +98 21 88363979-80

Fax: +98 21 88364100

Email: emacoirawr@who.int